

## Roadmap and Products H2 - 2012



A new class of Al.Mg casted alloy is arriving...  
allowing the thinnest tablet in the world.



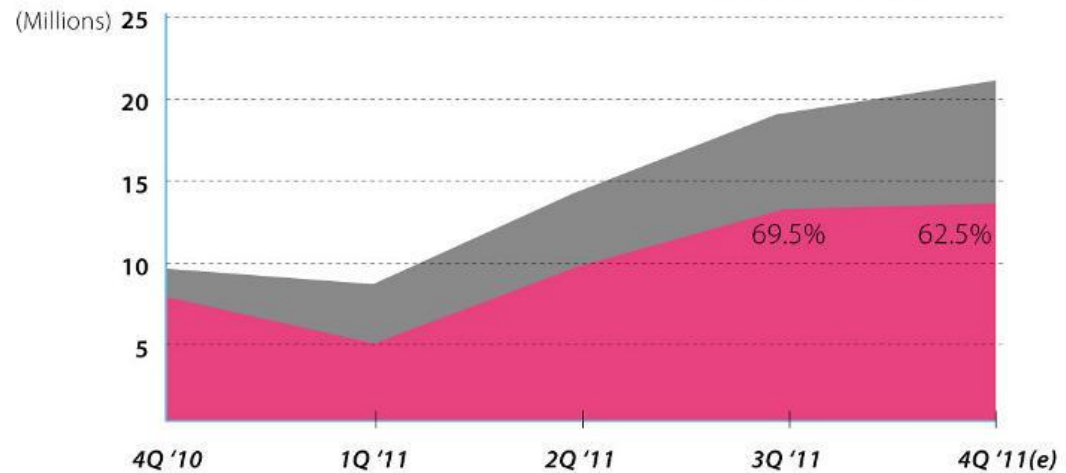
# Tablet Market Status

## Tablet Shipment (64 Million in 2011)

JP Morgan investment bank is forecasting worldwide tablet shipments will reach 99.3 million in 2012, 132.6 million in 2013.

### 4Q '10~4Q '11 Tablet Shipment

(source: DIGITIMES, 2012/02)

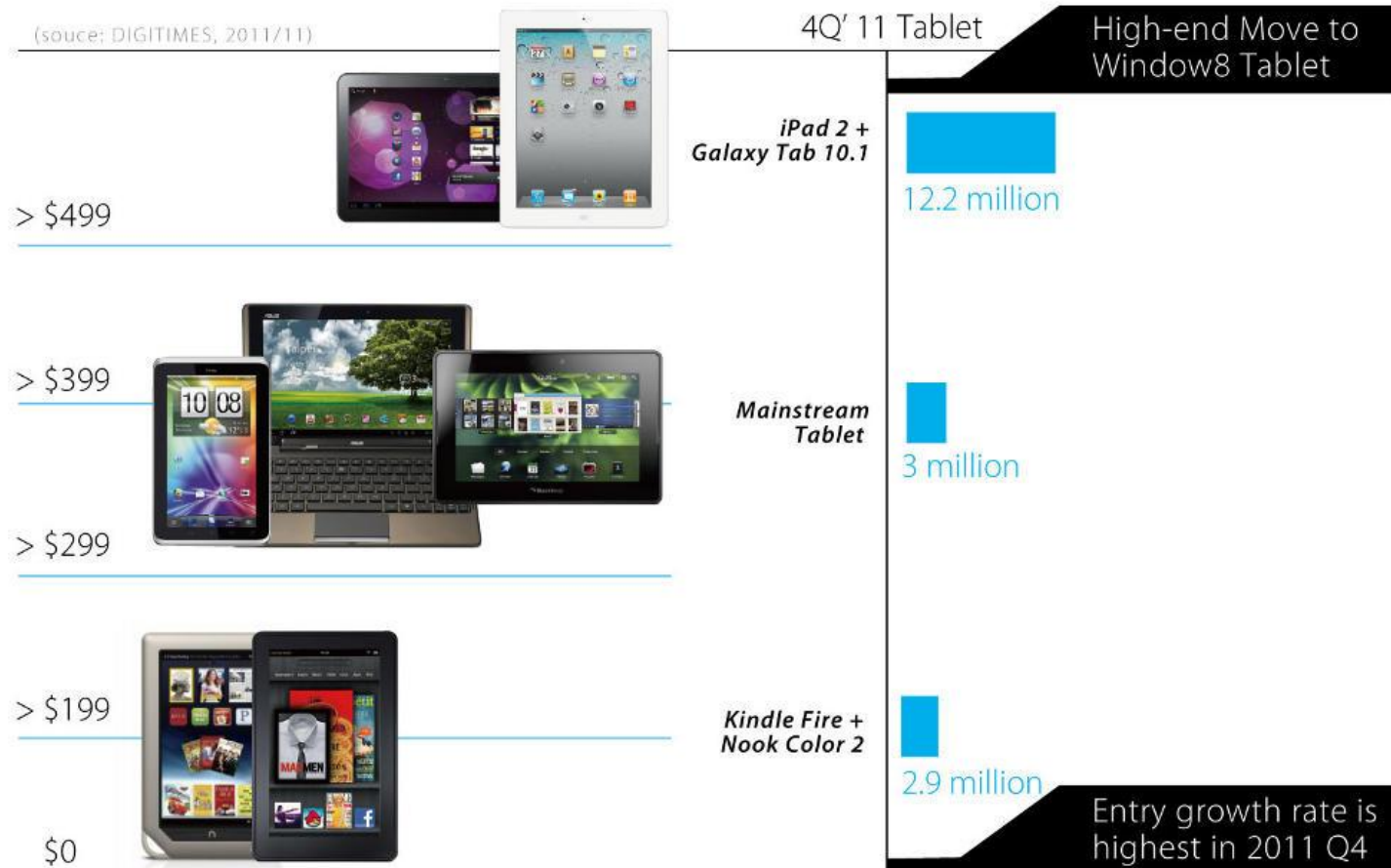


iPad	7.6	5.0	9.5	13	13.5
non-iPad	2.8	4.2	5.3	5.7	8.1

# Tablet Market Status

## The Influence of Windows 8

(source: DIGITIMES, 2011/11)



# Tablet Market Status

After Window 8 Launch  
Tablet Market Driven by three major OS



# Tablet Market Status

## The Influence of Windows 8

***Windows 8 is Microsoft's combined desktop, laptop and tablet operating system.***

It help to create a linear and consent user behavior upon switching between these devices.



### Performance

Quick boot up time. Low power consumption at standby mode.

### Specification

It will support both x86 and ARM devices, touch and sensors. It will come in all shapes and sizes, from tablets to TVs, from ultra-portable notebooks to desktops.

### Hardware

It is being designed with the purpose of working on touch devices as well as using traditional PC methods with a mouse and a keyboard.

### Software

You can switch from Metro apps to richer apps like we have been using in Windows easily.

### UI

Metro style UI offers touch gestures, "live tiles" and super simple ways to interact with content and apps.

### Apps

"Windows Store", developers can deploy apps and customers can easily download them.

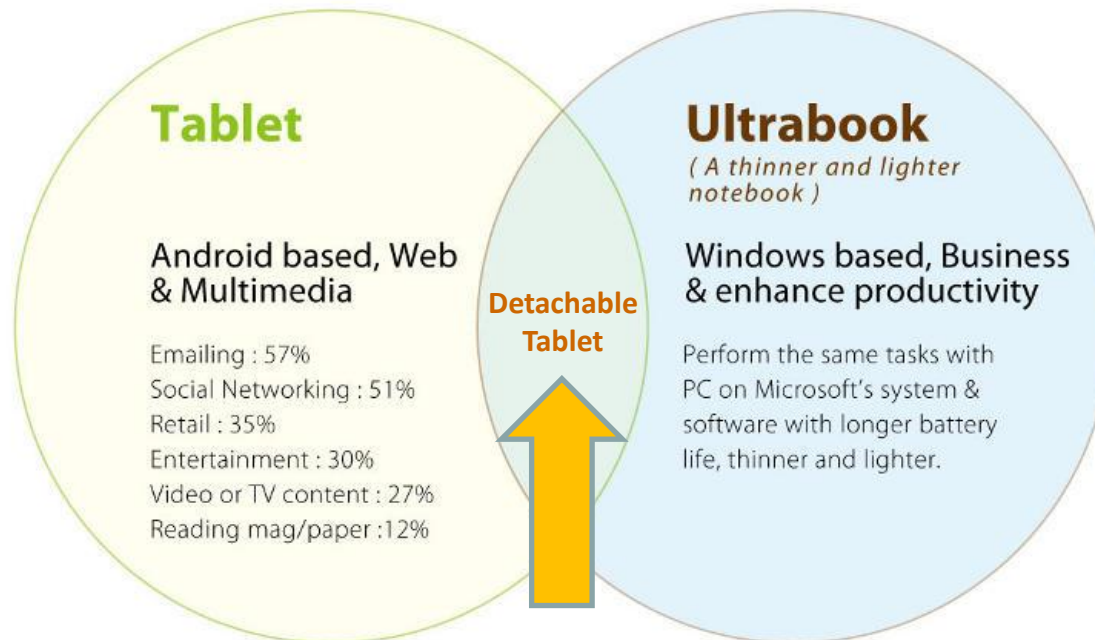
# Tablet Market Status

Hybrid : More form factor creation  
with touch friendly user interface (windows8)



# Tablet Market Status

## Detachable Tablet Positioning



The interviewees said, "Tablets are still weak on its commercial functionality and 40.7% interviewees are considering to buy another laptop for business use."

# Detachable (x86 Dali Project)



Docking station  
includes keyboard  
and double function  
as protective cover

# Detachable (x86 Dali Project)



## Thickness Analysis

Battery		Battery-Frame		DSC 8M	
Touch Lens (GFF)	0.825	Touch Lens (GFF)	0.825	Touch Lens (GFF)	0.825
Air gap	0.375	Air gap	0.375		
LCM(Max)	2.4	LCM(Max)	2.4		
Gap	0.2	Gap	0.2	Cushion	0.3
Battery (swelling space)	0.25	Metal	0.2	DSC 8M (Max)	6.63
		Adhesive	0.1	Sponge	0.3
Battery (Max)	3.7	Battery (Max)	3.7	Dsc lens	0.8
Main case	1.2	Main case	1.15		
Thickness	8.95mm	Thickness	8.95mm	Thickness	8.63mm

**Whole device L x W x H : 262.5 x 169 x 8.95 (mm)**

# Dali (x86 Product specification)

Model	P2-Dali
Product Type	Detachable Tablet
Processor	Intel <b>Clover Trail</b> Dual Core
Memory	RAM: LPDDR2 <b>2GB</b>
Storage	eMMC <b>64GB</b> (up to 128 GB)
Display	<b>10.1"</b> LCD (1366 x 768) ; 16:9 Wide-View
Camera	Front: <b>2M</b> pixel ; Rear: <b>8M</b> pixel
WWAN	Optional (for <b>3G</b> SKU, diversity support): <ul style="list-style-type: none"> <li>• GSM: Quad-band (850/900/1800/1900)</li> <li>• WCDMA/HSPA+ Tri-band (2100/1900/850)</li> </ul>
WLAN	802.11 a/b/g/n (BCM4330)
Bluetooth	BT4.0 (BCM4330)
NFC	YES ; eSE (Optional)
GPS	YES
Dimensions	262.9 x 169.5 x <b>8.95mm</b>
Weight	<b>583g</b>
I/O Ports	3.5mm Combo Audio Jack x 1 Micro USB x 1 Micro SD card slot x 1 SIM card slot x 1 (Optional) Docking Connector x 1 Micro HDMI
Audio	Stereo Speaker x 2 Built-in microphone x 2
Battery	27Whr ≈ <b>9 hours</b>
AC Adapter	24W 12V adapter

Model	P2-Dali
User Interface	Power key Volume up / Volume down Rotation Lock
Sensors	Ambient Light Sensor Proximity Sensor for SAR 3 - axis Accelerometer(G-sensor) e-Compass Gyro Sensor

Model	P2-Dali ( Docking / Keyboard )
Dimensions	262.8 x 187.5 x 9.5 mm
Weight	585 g
I/O Ports	USB x 1 Docking Connector x 1
User Interface	Keyboard Touch Pad
Battery	27Whr



# Detachable vs Ultrabook



Detachable Tablet



Ultrabook

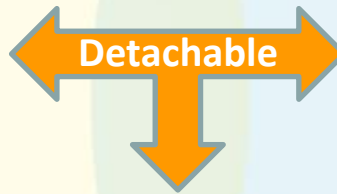
Processor	Dual Core, Intel Clover Trail	Intel Core i5-i7, 1.6~1.8 GHz
Memory	RAM: LPDDR2 2GB	RAM : LPDDR3 : 2~4GB
Storage	eMMC Flash 64GB ( Max up to : 128GB )	SSD 128/256/320 GB
Display	10.1"LCD (1366 x 768) 16:9 Wide-View	11.6" ~ 13.3" 1440 x 900, 1366 x 768, 1600 x 900
Camera	Front : 2M pixel, Rear : 8M pixel	only Front camera
Thickness	17mm, only 8.95 mm without KB docking	average 17mm
Weight	1.2kg ( screen : 595g + docking : 585g )	1.1~1.35kg
Battery	8 hours ( 25 Whr ) Extended battery life with docking	5~7 hours
Input method	finger, mouse, keyboard, touchpad	mouse, keyboard, touchpad
Share Feature	Low power consumption, energy saving, longer battery life, instant on	
Conclusion	BETTER battery life, touch interface & portability	Better performance

# Dali (x86 Summary)



## Tablet

- Instant access to website.
- Immediately access/reply to email in a line or two.
- Glance news or emails at work, on the way, or at home.
- Read documents on the run.
- Capture the beautiful moment and sync with friends.
- Access to social network on time, anywhere, anytime.
- At home, lay in the couch to read a e-book, watch movie or video chat before bedtime.
- Play a game with your siblings or your kids.



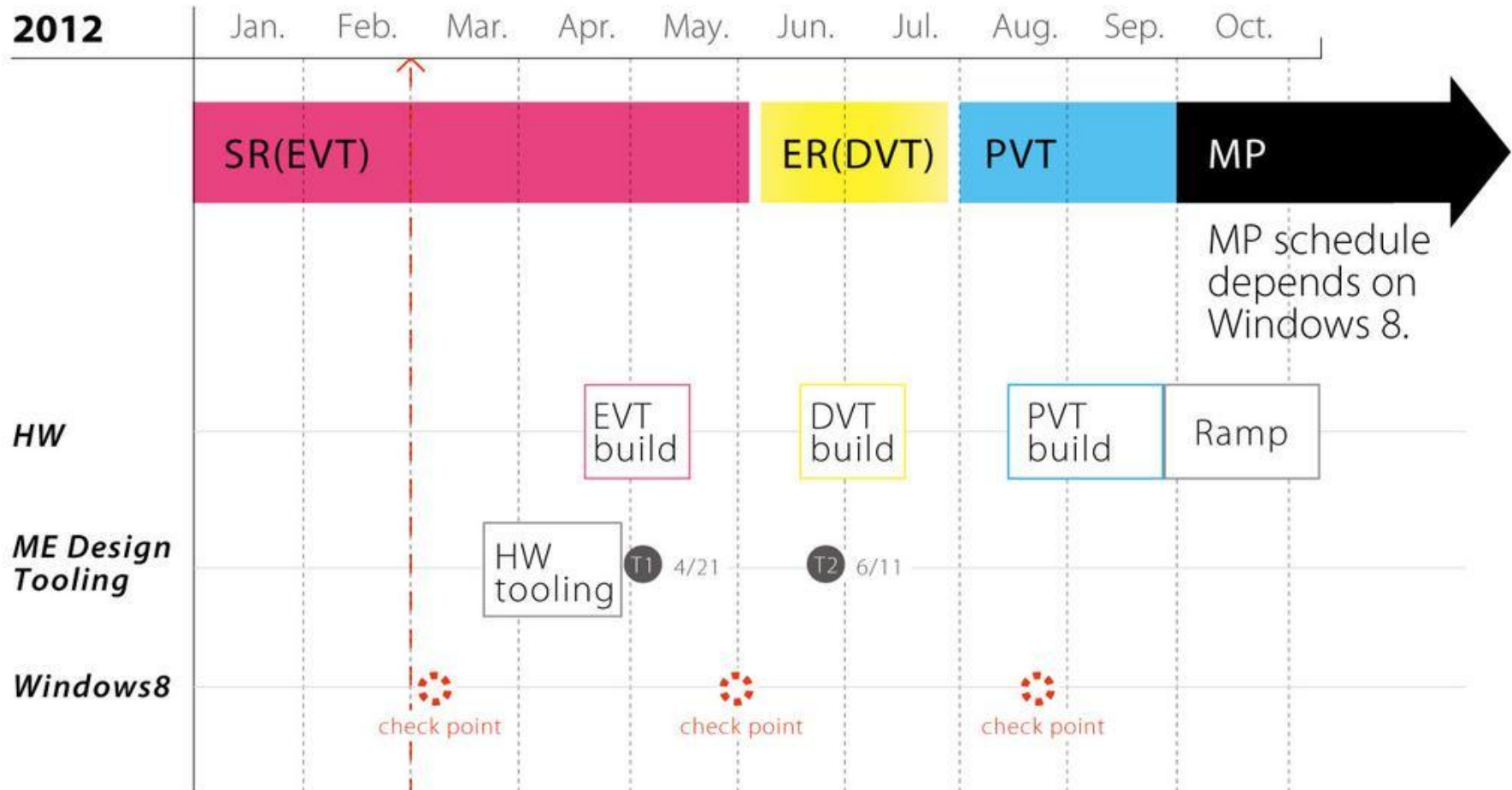
**Best of both worlds**



## Ultrabook

- Taking notes down in a meeting or in a lecture.
- Back to your desk for some serious work.
- Reply to lengthy emails.
- Working on a project which consume quiet a processor. (Ultrabooks have a better storage capacity & powerful specs.)

## Project Schedule



# inPAD (x86 Carbon Fiber)

**Model: I2-B11T**

Power: Ivy Bridge (Core i5)  
tablet with the **world's  
highest performance**

Exclusivity: the only tablet  
in the world with **full  
carbon fiber chassis**

Windows 8 support

**NFC** Built-in



# inPAD (x86 Carbon Fiber)

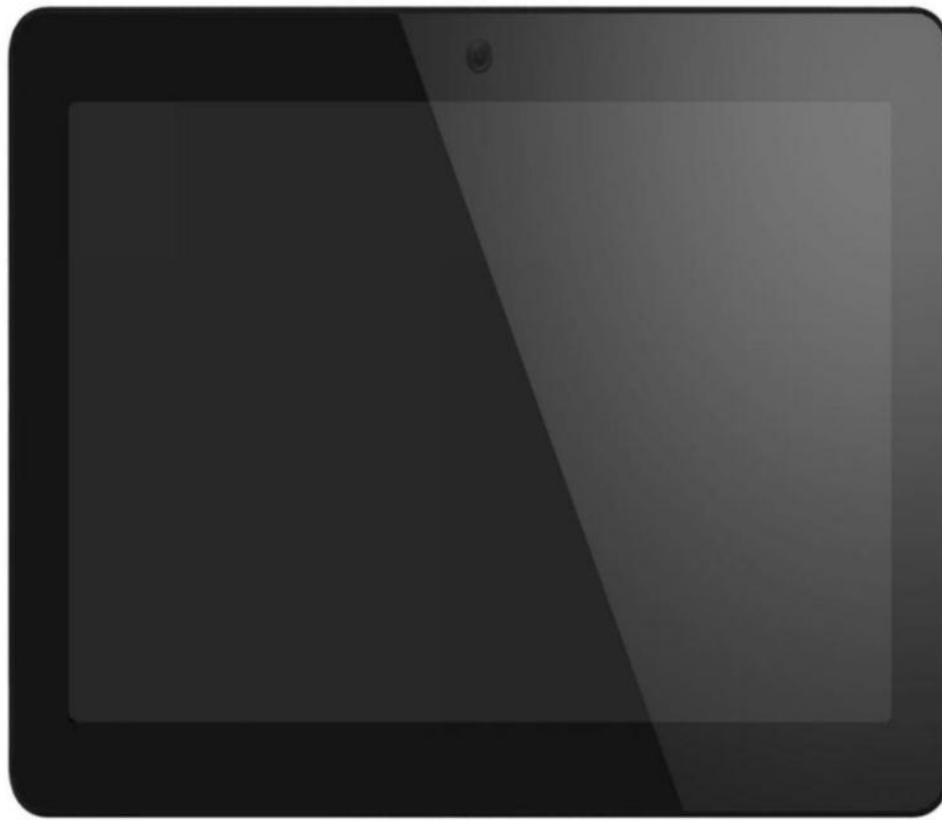
**Model:** I2-B11T

Thin: Only 11mm assures  
the **thinnest Core i5** known  
tablet

Light: the carbon fiber  
chassis allows for the  
**lightest tablet** in its class



# inPAD (x86 Carbon Fiber)



# inPAD (x86 Carbon Fiber)

Model	I2-B11T
Product Type	Carbon Fiber Tablet
Processor	Intel <b>Ivy Bridge</b> 17w <b>Core i5</b> Dual Core (Chipset HM77)
Memory	RAM: LPDDR3 <b>4GB</b>
Storage	mSATA eMMC <b>128GB</b> (up to 256 GB)
Display	<b>11.6"</b> LCD ( <b>1920 x 1080</b> ) ; 16:9 Wide-View
Camera	Front: 2M pixel ; Rear: -
WWAN	-
WLAN	802.11 a/b/g/n (AW-NB101)
Bluetooth	BT4.0 (AW-NB101)
NFC	YES
GPS	YES
Dimensions	297 x 193 x <b>11mm</b>
Weight	<b>&lt; 400g</b>
I/O Ports	3.5mm Combo Audio Jack x 1 <b>USB 3.0</b> x 2 Micro SD card slot x 1 Docking Connector x 1
Audio	Stereo Speaker x 2 Built-in microphone x 1
Battery	35Whr ≈ <b>9 hours</b>
AC Adapter	45W 19V adapter

Model	I2-B11T
User Interface	Power key Volume up / Volume down
Sensors	Ambient Light Sensor Proximity Sensor for SAR 3 - axis Accelerometer(G-sensor) e-Compass Gyro Sensor






## Products and Roadmap H2 2012



## Main developments


### Google Android 4.03 (ICS)

-  Redesigned user interface for an uniform experience across tablet and smartphone form factors. Many new features and a wide range of improvements across the core application stack


### Thinner and lighter

-  New materials (Al-Mg alloys) allow for thinner and lighter models, improving shock resistance.


### Multi-core CPU solutions with GPU

-  Up to quad core CPU's and high performance 3D engines, for the best performance in multimedia and games. Across the board increase in CPU speed (GHz)

### Higher resolution LCD's and IPS (In Plane Switching)

-  Increase to HD quality (800x480 → 1024x600 ; 1024x600 → 1280x800) and standardization of IPS technology, allowing for wider viewing angles (+170°), broader color range, higher brightness & better contrast

### More and faster memory

-  Overall increase to 1024 MB system memory and higher clock speed (DDR3) for faster data processing

## TN LCD to IPS LCD viewing angle



**TN LCD Panel**  
Used in current models



**IPS LCD Panel**  
New (high-end) models

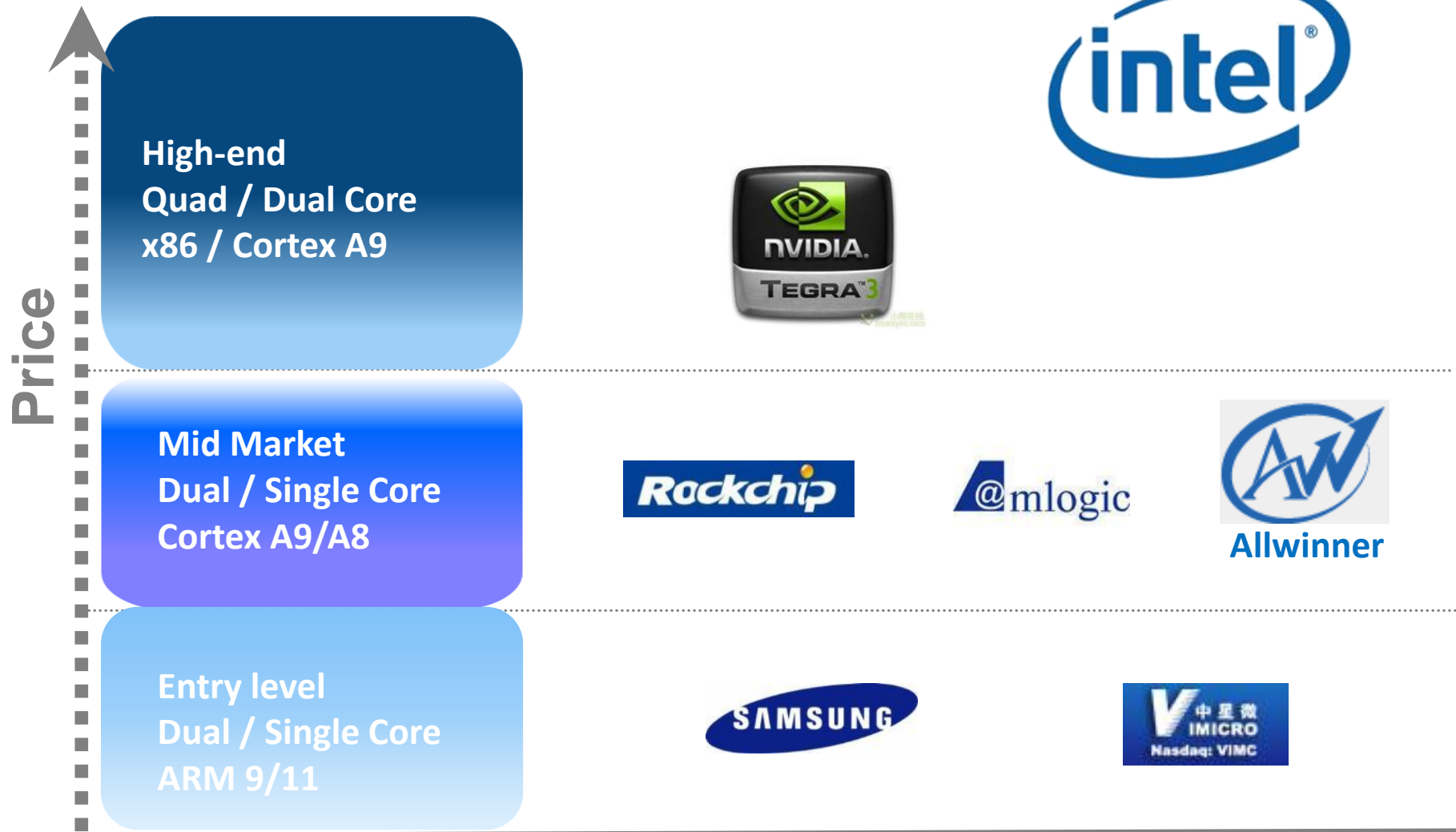
# Roadmap H2'12 (Arm)

## 3D Games

New GPUs integrated in the SoC designs allow for latest generation of Android games to be supported in all models – great 3D performance increase across the entire line



# Roadmap H2'12 (Arm)



# Roadmap H2'12 (Arm)

Intel

nVidia

Amlogic

Rockchip

Allwinner

Screen

7"

9.7"

10"



H2-7306CE



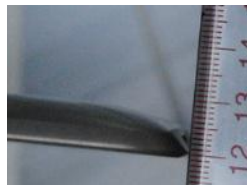
H2-7511CM



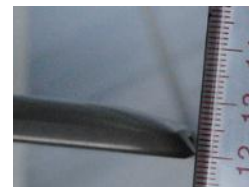
H2-7109CE  
7108CM/13CM



H2-9105CM



Ultra-Slim  
T2-AX01



Ultra-Slim  
T2-AD02



H2-1033CM



P2-Dali



M2-B1023

# 9.7" Razor (T2-AX01/AD02)

**Razor blade thin - 8.7mm**



**Casted alloy (Al-Mg)**

**Increased stiffness**



# 9.7" Razor (T2-AX01/AD02)

**Casted alloy (Al-Mg)**  
**UniBody milling technology**  
**Increased stiffness**



# 9.7" Blade 3G (T2-AD02)



Model	T2-AD02
OS	<b>Android 4.0.3 (ICS)</b>
CPU	<b>Dual Core AMLogic Cortex-A9 (1.5 GHz)</b> Integrated Mali-400 GPU - Up to 400MHz - Support 1080P, H.264
Display	<b>9.7"</b> 4:3 1024*768 <b>IPS HD</b> LCD display
Touch panel	5 point <b>capacitive</b> multi touch panel
Memory	<b>1GB</b> DDR3 1066MHz (Onboard)
Storage	Internal 8G/ <b>16G</b> /32G NAND eMMC Micro SD HC slot (for up to 32GB)
Camera	<b>1.3MP</b> front camera <b>3.0MP</b> back camera
Sensors	Compass, G-Sensor
Connectors	1* <b>mini-USB 2.0</b> 1* <b>mini-HDMI</b> 1* 3.5mm headphone
Audio	1w* 2 speakers Built in Microphone ; <b>FM</b> receiver
Connectivity	<b>3G/HSDPA+</b> up to 14 Mbps <b>WiFi</b> 802.11b/g/n + <b>Bluetooth</b> 2.0+EDR
Battery	<b>6300mAh</b> /3.7V – Standby: 17d - Video; 7hrs @ 100% brightness – Browsing: TBC
Dimensions	241*186* <b>8.7mm</b> and <b>595g</b>
Software	Android Market and Flash support
Options	Optional laser design in alu cover Ultra thin UniBody Al.Mg milling technology



**Ultra slim - Only 8.7mm**

# 9.7" Blade (T2-AX02)



**Ultra slim - Only 8.7mm**

Model	T2-AX02
OS	<b>Android 4.0 (ICS)</b>
CPU	<b>AML8726-M3</b> Cortex-A9 (1.0 GHz) Integrated Mali-400 GPU - Up to 250MHz - Support 1080P, H.264
Display	<b>9.7"</b> 4:3 1024*768 IPS LCD display
Touch panel	5 point <b>capacitive</b> multi touch panel
Memory	<b>1GB</b> DDR3 1066MHz (Onboard)
Storage	Internal <b>8G/16G/32G</b> NAND eMMC Micro SD HC slot (for up to 32GB)
Camera	<b>1.3MP</b> front camera <b>3.0MP</b> back camera
Sensors	Compass, G-Sensor
Connectors	1* <b>mini-USB 2.0</b> 1* <b>mini-HDMI</b> 1* 3.5mm headphone
Audio	1w* 2 speakers Built in Microphone
Connectivity	<b>WiFi</b> 802.11b/g/n Bluetooth 2.0+EDR (optional)
Battery	<b>6000mAh/3.7V</b> – Standby: 17d - Video; 7,5h @ 100% brightness – Browsing: TBC
Dimensions	241*186* <b>8.7mm</b> and <b>595g</b>
Software	Android Market and Flash support
Options	Optional laser design in alu cover

# 10.1" Dual Core (M2-B1023)



**Soft rubber finish  
for easy handling**



**Skinny slim - Only 10.8mm**



# 10.1" Dual Core (M2-B1023)



**Skinny slim - Only 10.8mm**



Model	M2-B1023
OS	<b>Android 4.0 (ICS)</b>
CPU	<b>Dual Core</b> nVidia Tegra T30 Cortex-A9 (1.3GHz)
Display	<b>10"</b> 16:9 1280*800 IPS LCD display
Touch panel	10 point <b>capacitive</b> multi touch panel
Memory	<b>1GB</b> LP DDR2
Storage	<b>8G/16G/32G</b> NAND eMMC
Camera	<b>2.0MP</b> front camera <b>5.0MP</b> back camera
Sensor	Accelerometer, Ambient Light, Compass, Gyroscope, Vibrant Motor (Optional)
Connectors	1* Docking connector 1* 3.5mm headphone
Audio	1w* 2 speakers Built in Microphone
Connectivity	<b>WiFi</b> 802.11b/g/n Bluetooth 2.1+EDR <b>GPS</b> and <b>3G</b>
Battery	<b>6500mAh/3.7V</b>
Dimensions	256.8*175* <b>10.2mm</b> and only 630g
Software	Android Market and Flash support
Options	Optional color covers in plastic fluffy material



# 9.7" Confort 3G (H2-1033CM)



Model	H2-1033CM
OS	<b>Android 4.0 (ICS)</b>
CPU	Rockchip 2918 1,2Ghz (Cortex A8 + Mali400)
Display	<b>9.7"</b> 4:3 1024*768 <b>IPS</b> LCD display
Touch panel	10 points <b>capacitive</b> multi touch panel
Memory	512MB / <b>1GB</b> DDR3
Storage	4GB / <b>8GB</b> / 16GB NAND T-Flash (microSD) card (up to 32GB)
Camera	0.3MP <b>Front camera</b> 2.0MP Back Camera
Sensor	G-sensor
Connectors	2* mini <b>USB2.0</b> 1* mini <b>HDMI</b> 1* Micro-SD card slot 1* 3.5mm headphone 1* SIM card slot
Audio	1w*2 stereo speaker Built in Microphone
Connectivity	<b>WiFi</b> 802.11b/g/n <b>Internal 3G/HSDPA</b> <b>Bluetooth</b>
Battery	<b>6600mAh/3.7V</b>
Dimensions	242*189* <b>9,9mm</b>
Software	Android Market and Flash support
Options	-

# 9.7" Confort (H2-9105CM)



Model	H2-9105CM
OS	<b>Android 4.0 (ICS)</b>
CPU	Allwinner A10 1Ghz (Cortex A8 + Mali400)
Display	<b>9.7"</b> 4:3 1024*768 <b>IPS</b> LCD display
Touch panel	10 points <b>capacitive</b> multi touch panel
Memory	512MB / <b>1GB</b> DDR3
Storage	4GB / <b>8GB</b> / 16GB NAND T-Flash (microSD) card (up to 32GB)
Camera	0.3MP <b>Front camera</b> 2.0MP Back Camera (optional)
Sensor	G-sensor
Connectors	2* mini <b>USB2.0</b> 1* mini <b>HDMI</b> 1* Micro-SD card slot 1* 3.5mm headphone
Audio	1w*2 stereo speaker Built in Microphone
Connectivity	<b>WiFi</b> 802.11b/g/n Supports external 3G dongle
Battery	<b>6600mAh/3.7V</b>
Dimensions	242*189* <b>9.9mm</b>
Software	Android Market and Flash support
Options	Optional back camera

# 7" Value 3G (H2-7113CM)



Model	H2-7113CM
OS	<b>Android 4.0</b> (ICS)
CPU	Allwinner A10 1Ghz (Cortex A8 + Mali400)
Display	<b>7.0"</b> 16:9 <b>800*600</b> LCD display ; <b>Surface</b> flat
Touch panel	<b>5</b> points <b>capacitive</b> multi touch panel
Memory	<b>512MB</b> DDR3
Storage	<b>8GB</b> NAND T-Flash (microSD) card (up to 32GB)
Camera	0.3MP <b>Front camera</b>
Sensor	G-sensor
Connectors	1* mini <b>USB2.0</b> 1* mini <b>HDMI</b> 1* Micro-SD card slot 1* 3.5mm headphone 1* SIM card slot
Audio	1w*1 mono speaker Built in Microphone
Connectivity	<b>WiFi</b> 802.11b/g/n <b>Internal 3G</b> /HSDPA <b>Bluetooth</b>
Battery	<b>3000mAh</b> /3.7V
Dimensions	191*118* <b>11.5mm</b>
Software	Android Market and Flash support
Options	Optional 4000mAh battery

# 7" Value (H2-7108CM)



Model	H2-7108CM
OS	<b>Android 4.0 (ICS)</b>
CPU	Allwinner A10 1Ghz (Cortex A8 + Mali400)
Display	<b>7.0"</b> 16:9 800*480 LCD display ; <b>Surface</b> flat
Touch panel	<b>5</b> points <b>capacitive</b> multi touch panel
Memory	<b>512MB</b> DDR3
Storage	<b>4GB</b> NAND T-Flash (microSD) card (up to 32GB)
Camera	0.3MP <b>Front camera</b>
Sensor	G-sensor
Connectors	1* mini <b>USB2.0</b> 1* mini <b>HDMI</b> 1* Micro-SD card slot 1* 3.5mm headphone
Audio	1w*1 mono speaker Built in Microphone
Connectivity	<b>WiFi</b> 802.11b/g/n Supports external 3G dongle
Battery	<b>3000mAh/3.7V</b>
Dimensions	191*118* <b>11.5mm</b>
Software	Android Market and Flash support
Options	Optional 4000mAh battery

# 7" Value (H2-7109CE)



Model	H2-7109CE
OS	<b>Android 4.0 (ICS)</b>
CPU	Allwinner A10 1Ghz (Cortex A8 + Mali400)
Display	<b>7.0"</b> 16:9 800*480 LCD display (1024*600 optional)
Touch panel	2 points <b>capacitive</b> multi touch panel (5 points capacitive optional)
Memory	<b>512MB</b> DDR3
Storage	<b>4GB</b> NAND T-Flash (microSD) card (up to 32GB)
Camera	0.3MP <b>Front camera</b>
Sensor	G-sensor
Connectors	1* mini <b>USB2.0</b> 1* mini <b>HDMI</b> 1* Micro-SD card slot 1* 3.5mm headphone
Audio	1w*1 mono speaker Built in Microphone
Connectivity	<b>WiFi</b> 802.11b/g/n Supports external 3G dongle
Battery	<b>3000mAh/3.7V</b>
Dimensions	191*118* <b>11.5mm</b>
Software	Android Market and Flash support
Options	Optional 4000mAh battery

# 7" Project (H2-7511CM)



Model	H2-7511CM
OS	<b>Android 4.0 (ICS)</b>
CPU	RockChip 2906 1Ghz (Cortex A8 + Mali400)
Display	<b>7.0"</b> 16:9 800*480 LCD display
Touch panel	2 points <b>capacitive</b> multi touch panel
Memory	<b>512MB</b> DDR3
Storage	<b>4GB</b> NAND T-Flash (microSD) card (up to 32GB)
Camera	0.3MP <b>Front camera</b>
Sensor	G-sensor
Connectors	1* mini <b>USB2.0</b> 1* Micro-SD card slot 1* 3.5mm headphone
Audio	1w*1 mono speaker Built in Microphone
Connectivity	<b>WiFi</b> 802.11b/g/n Supports external 3G dongle
Battery	<b>2400mAh/3.7V</b>
Dimensions	191*118* <b>12.5mm</b>
Software	Android Market and Flash support
Options	<b>Available only for tender projects</b>

# 7" LV Project (H2-7306CE)



Model	H2-7306CE
OS	<b>Android 4.0 (ICS)</b>
CPU	AML10 1Ghz (Cortex A8 + Mali400)
Display	<b>7.0"</b> 16:9 800*480 LCD display
Touch panel	2 points <b>capacitive</b> multi touch panel
Memory	<b>512MB</b> DDR3
Storage	<b>4GB</b> NAND T-Flash (microSD) card (up to 32GB)
Camera	0.3MP <b>Front camera</b>
Sensor	G-sensor
Connectors	1* mini <b>USB2.0</b> 1* Micro-SD card slot 1* 3.5mm headphone
Audio	1w*1 mono speaker Built in Microphone
Connectivity	<b>WiFi</b> 802.11b/g
Battery	<b>2200mAh/3.7V</b>
Dimensions	191*118* <b>12.5mm</b>
Software	Android Market and Flash support
Options	<b>Available only for large tender projects</b>